

# Sulfate

Sulfate is a widely present anion found in nearly all natural waters. Consisting of one sulfur atom coupled with four oxygen atoms, sulfate is typically highly water soluble. Although not especially hazardous by itself, sulfate can impact industrial processes. Sulfate may be found in oilfield waters, where sulfate-reducing bacteria can convert sulfate into hazardous hydrogen sulfide. In flue gas desulfurization water from coal-fired power plants, sulfur compounds are converted to sulfate to produce gypsum, leaving 3500-ppm or more of sulfate in the waste water, impacting the ability to treat other contaminants. With proper sample preparation or kit usage, measurement over a larger range (>100-ppm) or with improved accuracy at lower concentrations is possible.

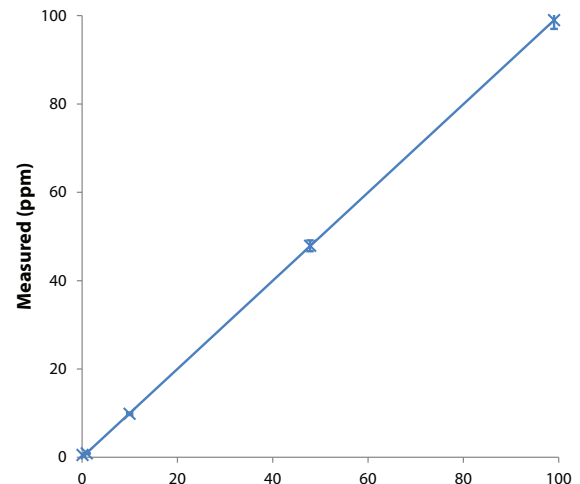


## Benefits

- Minimal training needed
- Minutes per test with milliliters of sample
- Directly measure spent scavenger solutions without extensive sample preparation

## Specifications

- Accuracy:**  $\pm 10\%$  10-100-ppm,  $\pm 3\text{ppm}$  <10-ppm
- Range:** 0 to 100-ppm
- Count:** 10 cartridges per box



## Ordering Information

### Product

Sulfate Analysis Cartridges

### Part Number

OV-PP-B021