

Selenium

Selenium is a major concern in both drinking and industrial water. The U.S. EPA regulates selenium in drinking water at 50-ppb. Selenium concentrations need to be measured industrially in flue gas desulfurization (FGD) and refinery waste streams, coal-ash ponds, battery recycling applications, and mining discharge waters. The OndaVia Selenate Analysis Cartridge is designed to measure selenate [selenium (VI)] at sub-10 ppb levels in the presence of up to 3-ppm sulfate. Pre-treatment kits are available to reduce sulfate levels to the target analysis range. Selenate is the most biologically active form of selenium, and the OndaVia Analysis System can detect this species specifically. Total selenium can be determined through an additional oxidation step.



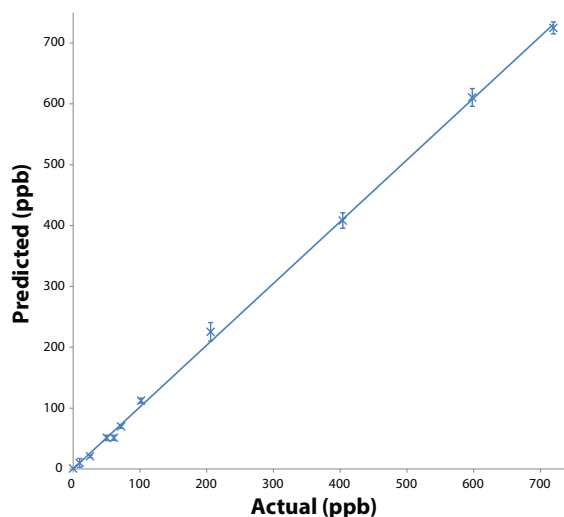
Specifications

Accuracy:

±3-ppb in 5- to 30-ppb
±10% in 30- to 100-ppb

Range: 5- to 100-ppb

Count: Ten (10) tests per box



Ordering Information

Product

Selenate Analysis Cartridges

Selenate Analysis Tubes

Part Number

OV-PP-B005-PPB

OV-OP-B005-PPB