

Formaldehyde

Formaldehyde is the simplest aldehyde with many potential sources in water or hydrocarbon matrices. The presence of formaldehyde can lead to challenges in wastewater treatment due to poisoning or carbon bioavailability. In food and beverage applications, formaldehyde can be hazardous for consumption. Our method for formaldehyde analysis builds upon the long-standing colorimetric method for aldehydes. With the addition of an internal standard and the use of Quantitative Raman Spectroscopy for measurement, the OndaVia approach is more sensitive and more specific.

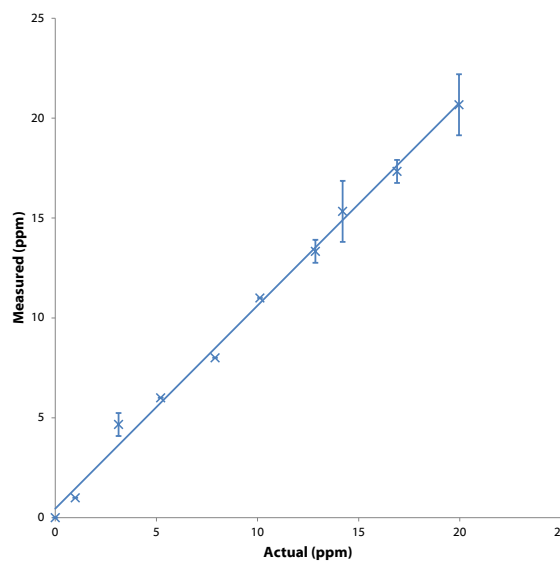


Benefits

- Minimal training needed
- Minutes per test with milliliters of sample
- Measure formaldehyde in complex water samples without interference from other aldehydes

Specifications

- Range:**
OV-PP-B024-LPM 1- to 20-ppm ± 1 -ppm or 10%
- Sample Size:** 1-ml



Ordering Information

Product

- Methanol Analysis Cartridges
- Formaldehyde Analysis Cartridges

Part Number

- OV-PP-B036-LPM
- OV-PP-B024-LPM